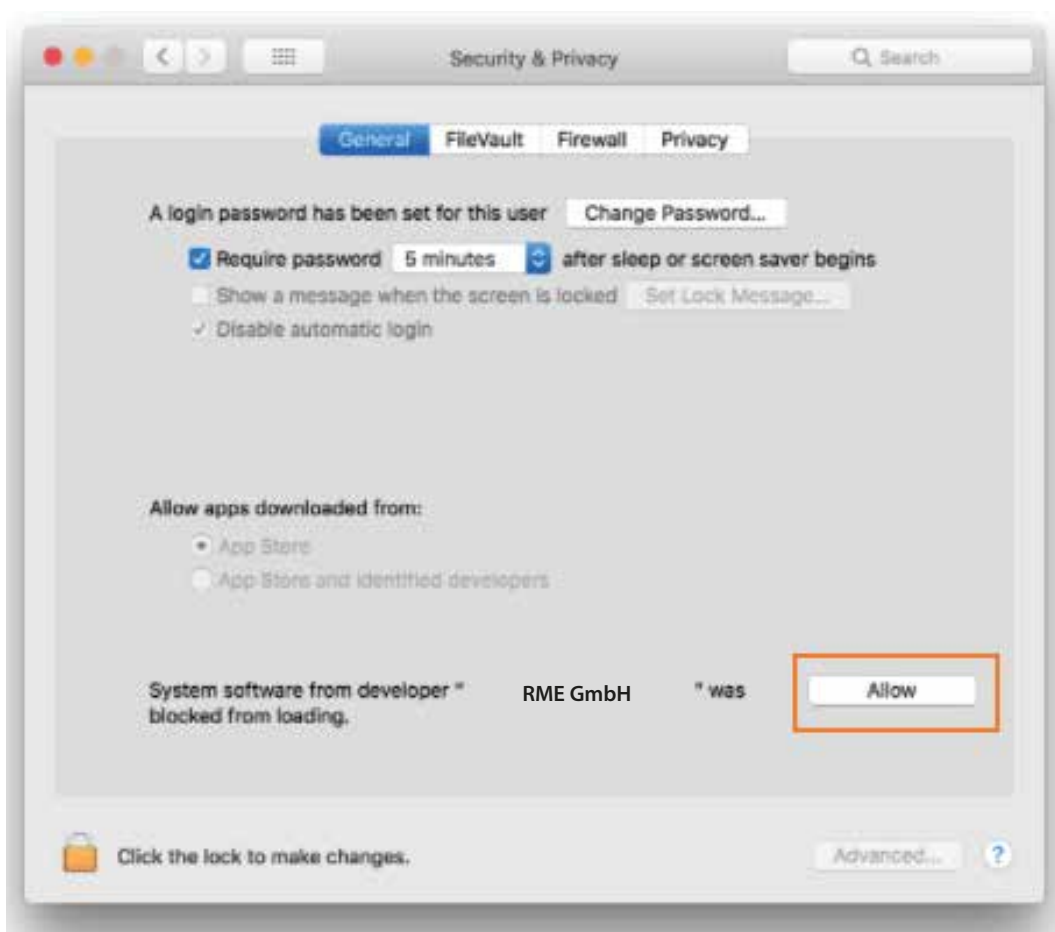


RME Interface is not recognized after successful installation

Please make sure that your device is connected and turned on. Start TotalMix and the Settings dialog from the Applications folder.

The RME applications will have to be authorized manually in System Preferences / 'Security and Privacy'. No longer than 30 minutes after installing the RME driver, you will need to click the 'Allow' button in the lower right corner.

If the button does not immediately disappear, please manually start the RME driver settings Window and TotalMix FX and then press "Allow" again.



If the "Allow" button is NOT visible, you may need to reinstall the driver again to make it appear again.

If you encounter any problems please contact our Technical Support: support@rme-audio.de

Original information from Apple:

https://developer.apple.com/library/content/technotes/tn2459/_index.html

High Sierra driver installation