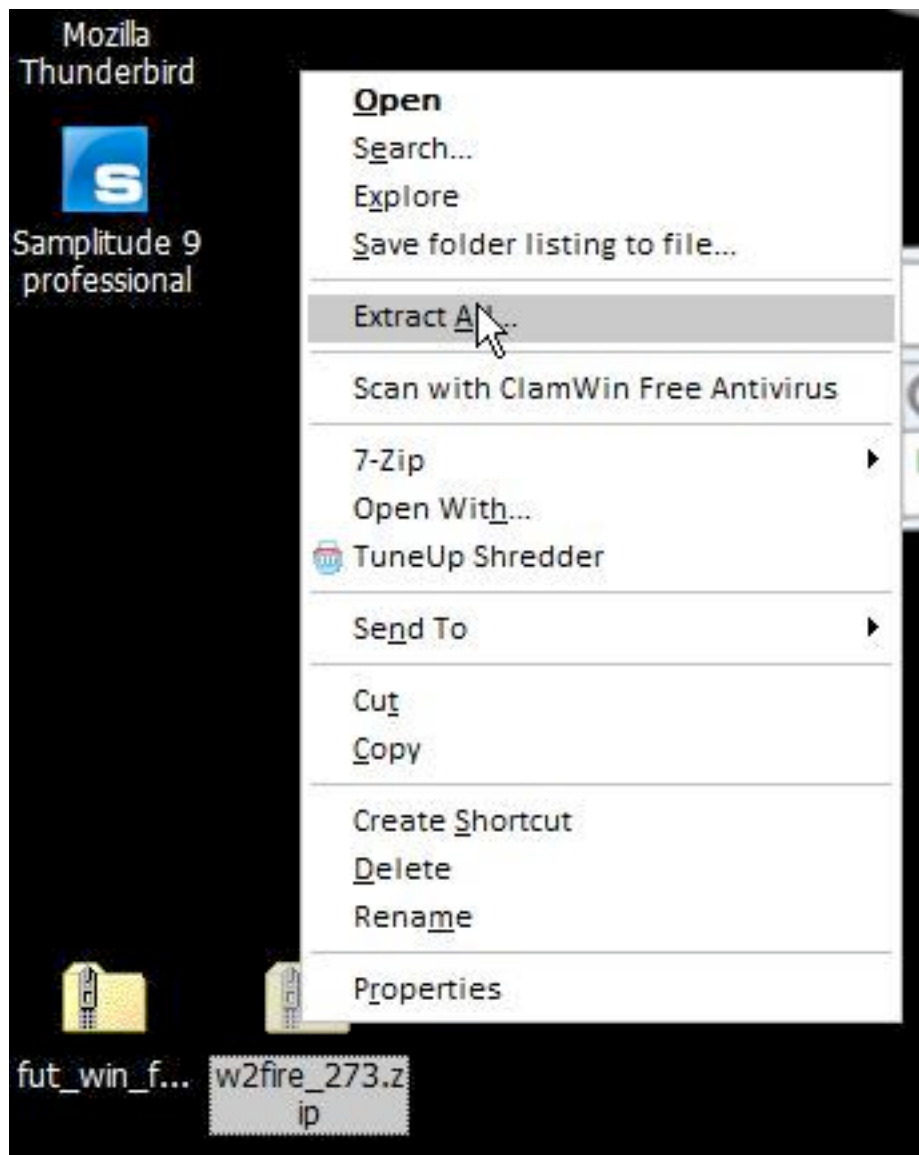


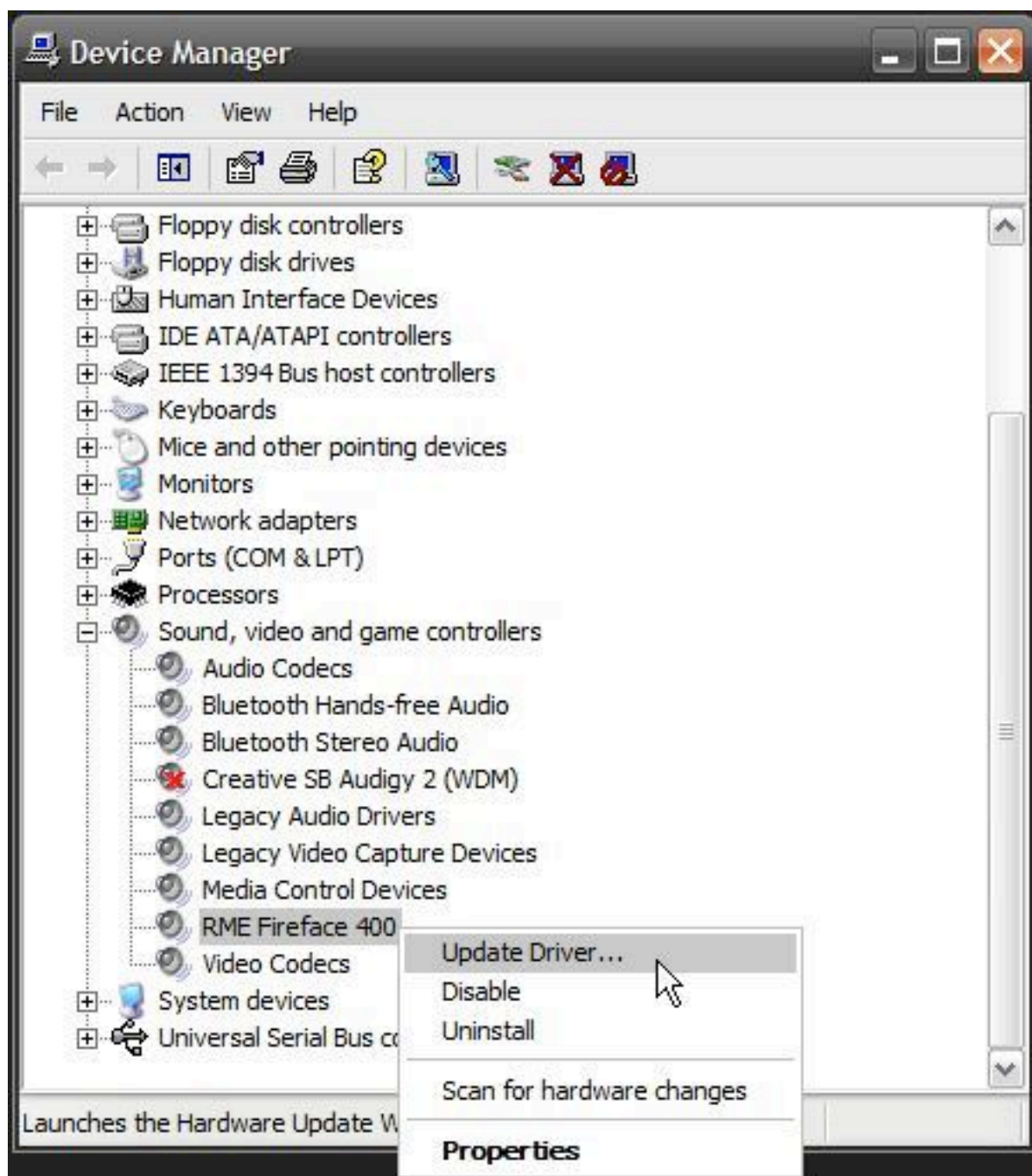
RME Driver Install and Update Guide for Windows XP

This step-by-step guide is intended to show RME users how to install drivers and set up a device for the first time under Windows XP. Since most computer peripherals these days use executable files for driver install, not too many people are experienced with directing the Found New Hardware Wizard properly.

Download the latest driver and flash update tool for your interface and operating system from the RME website. Extract the downloaded Zip files to folders (Right-click, Extract All).



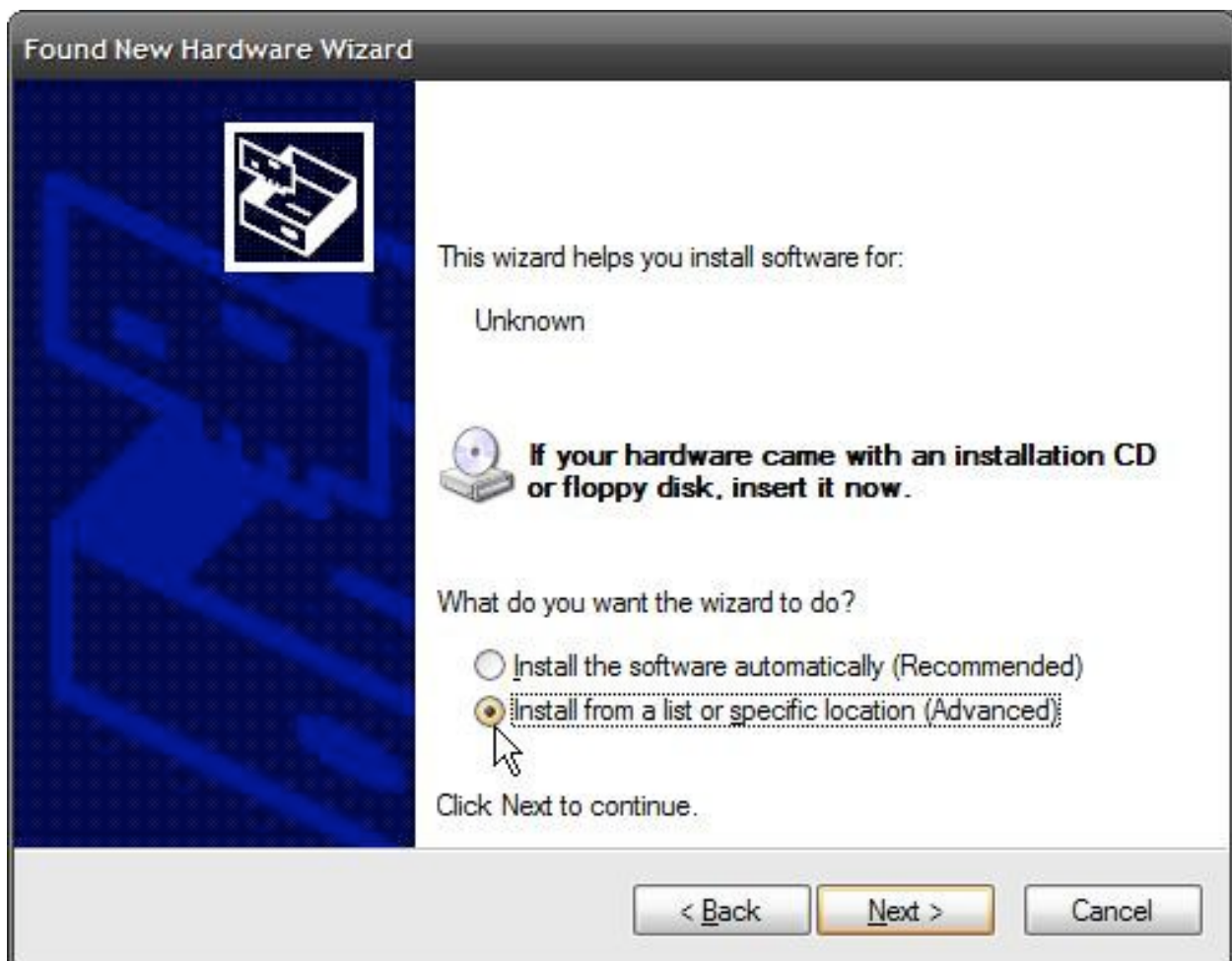
Updating the driver for an RME device is very similar to the initial install, and all the steps below apply to this process. You can start the driver update by launching the Driver Update Wizard manually. Find your RME interface in the Device Manager (Control Panel -> System -> Hardware tab -> Device Manager) under the Sound, Video and Game Controllers heading. Right-click on the device and select **Update Driver**.



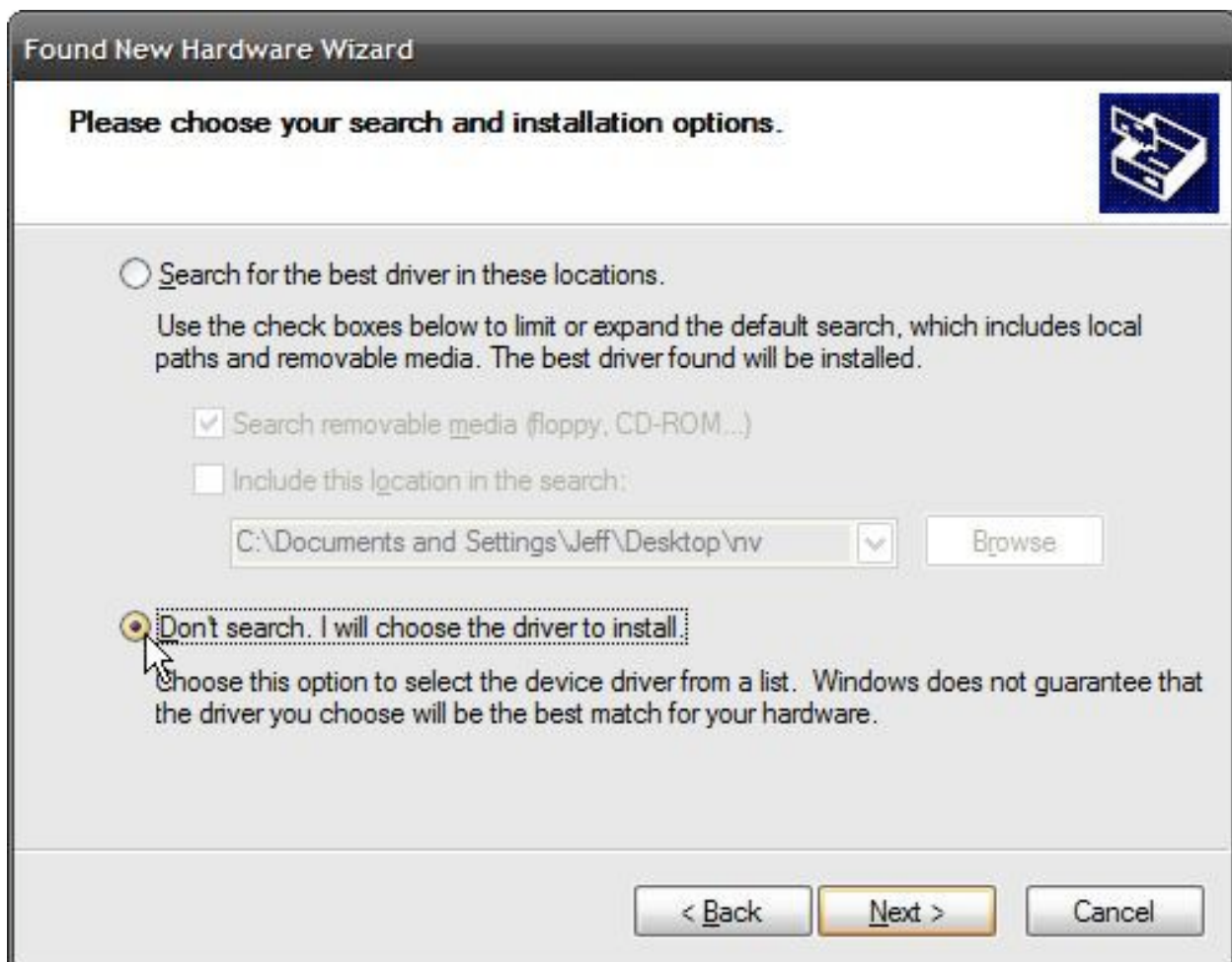
Shut down the computer and install the interface. After restarting the computer you will be greeted with the Found New Hardware Wizard. Windows will ask to search for drivers; select **No, not this time**.



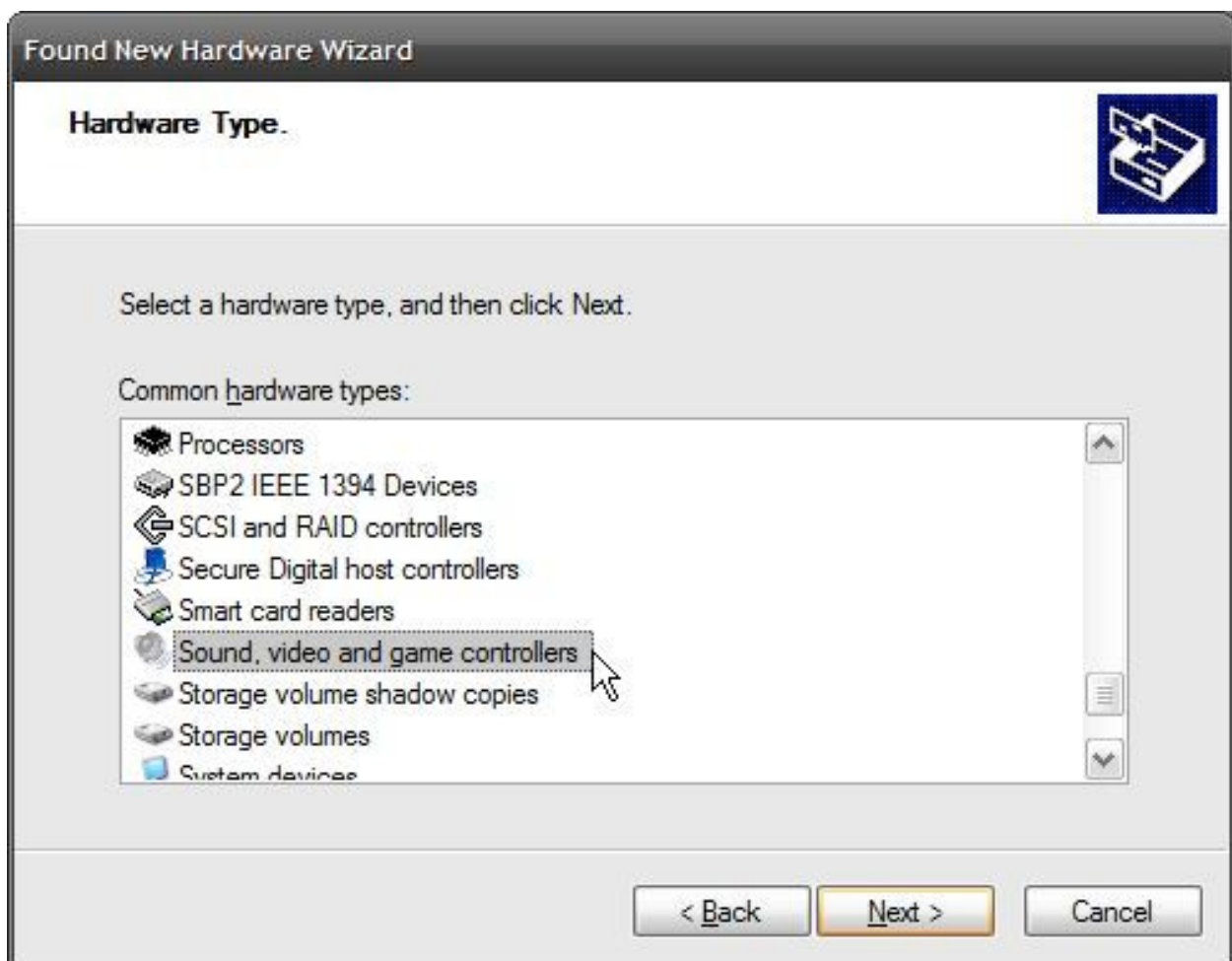
Then select **Install from a list or specific location (Advanced)**.



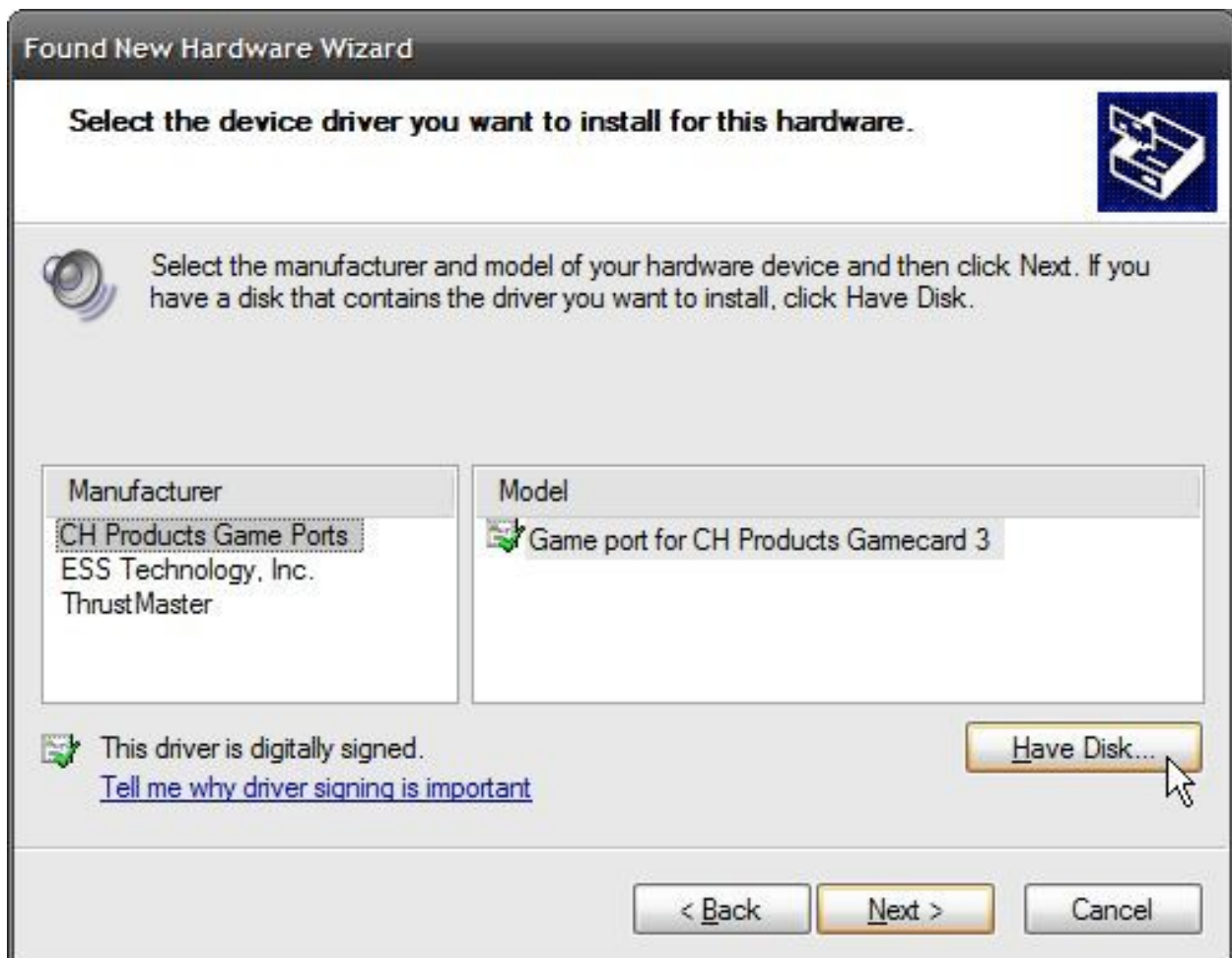
Next, select **Don't search. I will choose the driver to install.**



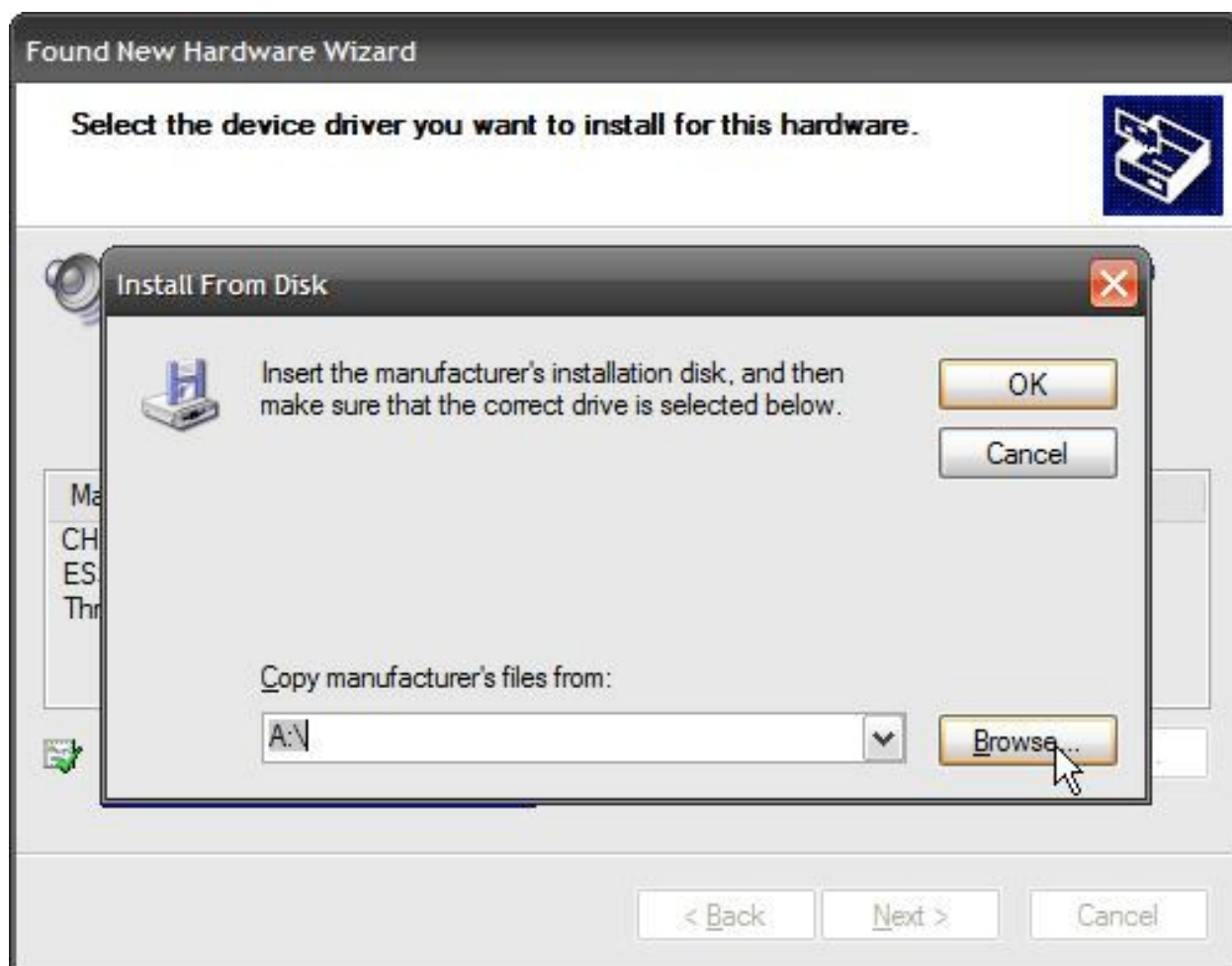
If prompted to select the hardware type, choose **Sound, video and game controllers**.



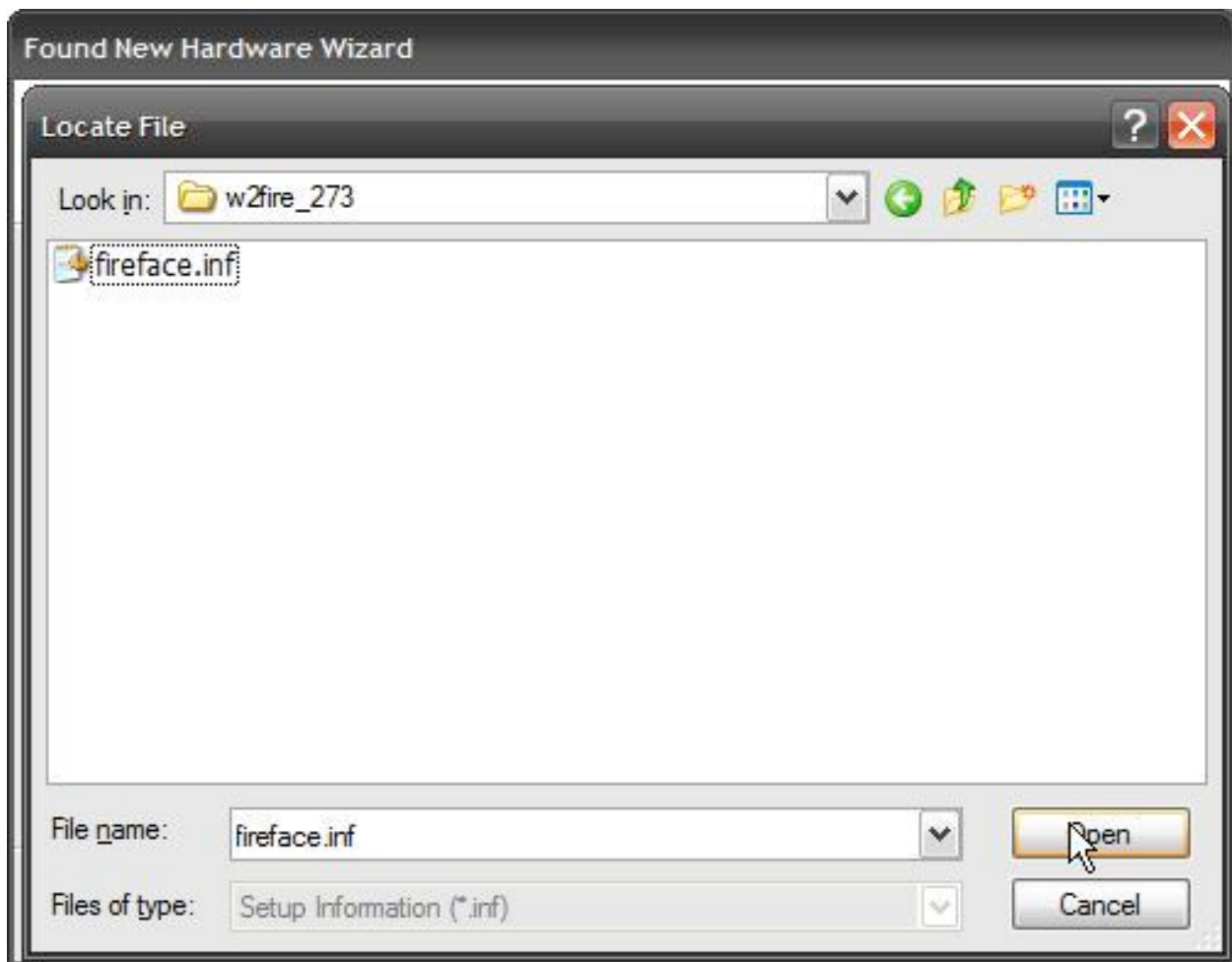
The next screen will allow you to select the device driver to install. If you are updating drivers you will see some RME drivers listed here. Ignore these; they are the old drivers. Always use the **Have Disk** button to ensure that the correct driver is installed.



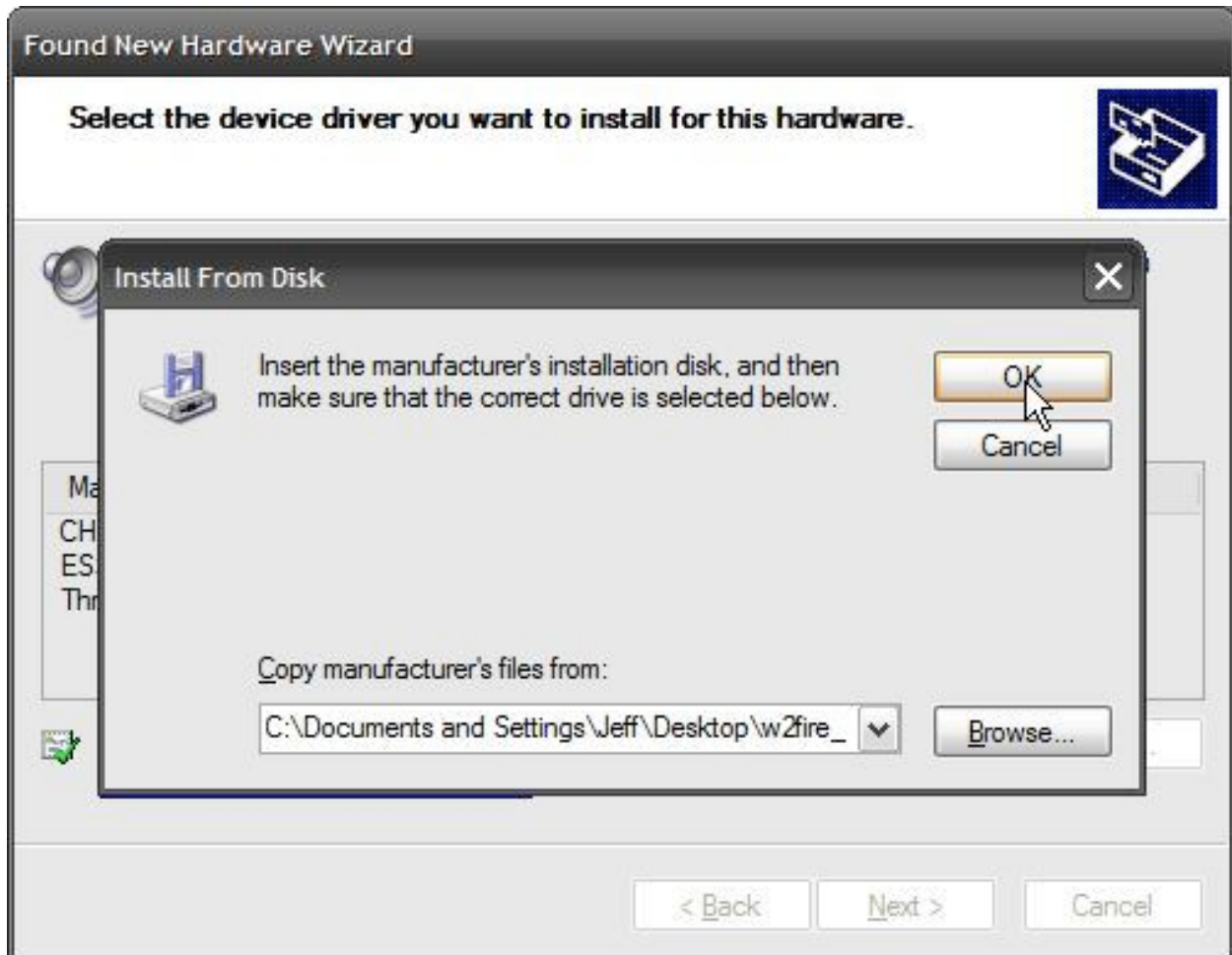
Click the **Browse** button and find the unzipped driver folder.



Once you see the INF file for the device displayed in the Locate File window, click **Open**.



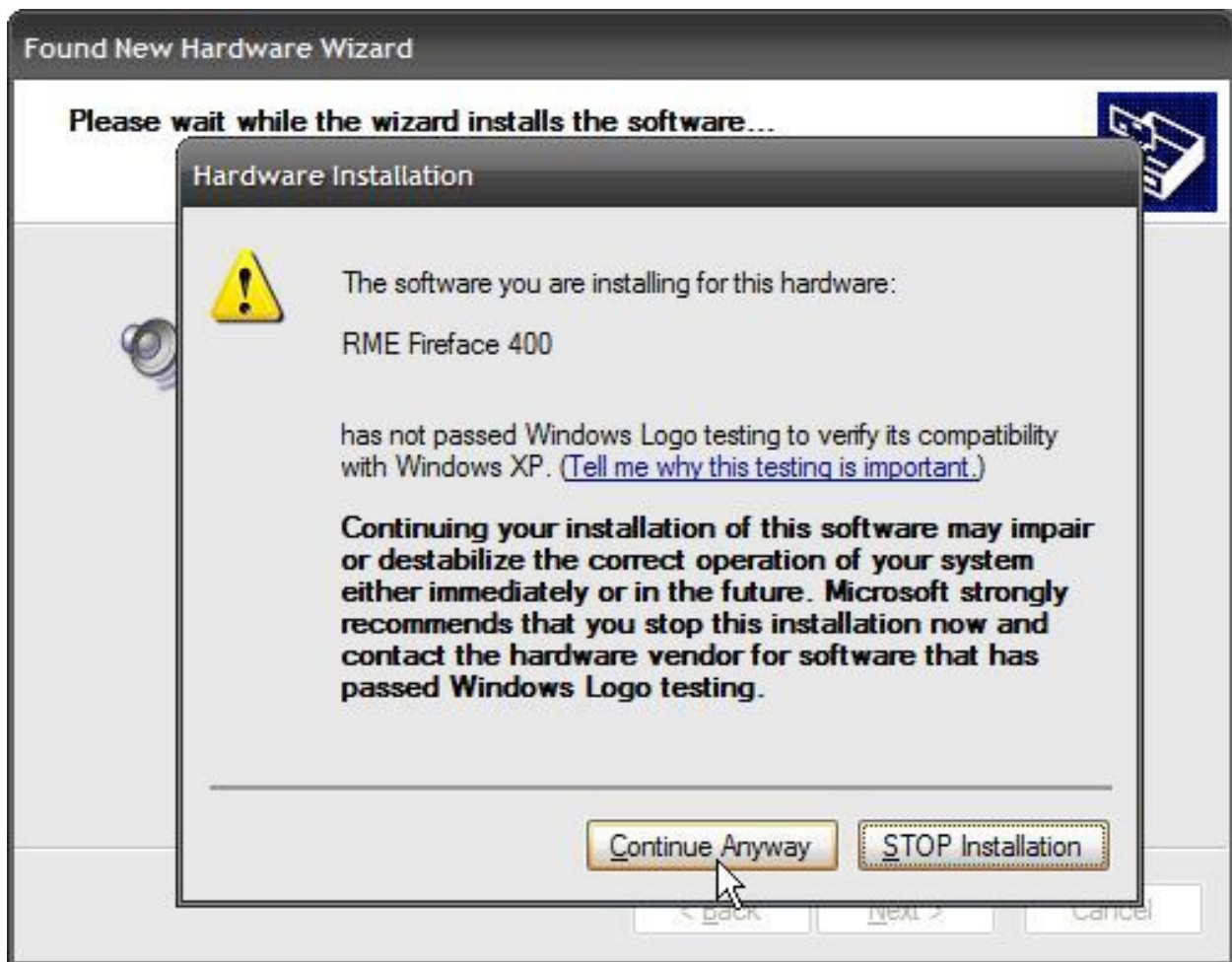
The Locate File window will close, and you'll be back at the Install From Disk window. Now, however, the correct path to the driver will be displayed at the bottom. Click **OK** to continue.



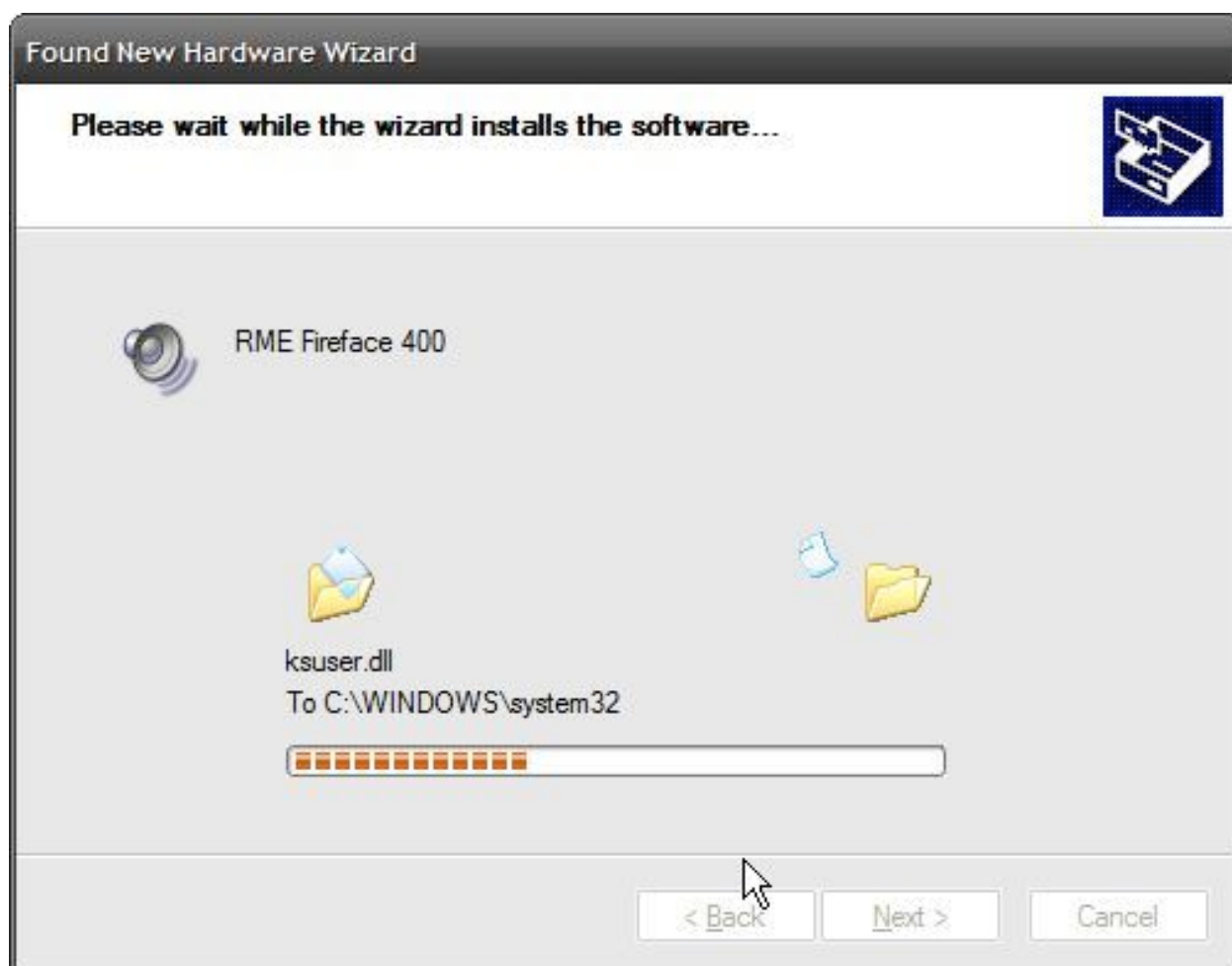
The Install From Disk window will close, leaving you back at the Found New Hardware wizard. Now you will see only one driver listed in the Show Compatible Hardware display area. Click **Next** to install this driver.



Windows will warn you that the software is not digitally signed by Microsoft. Click **Continue Anyway**.



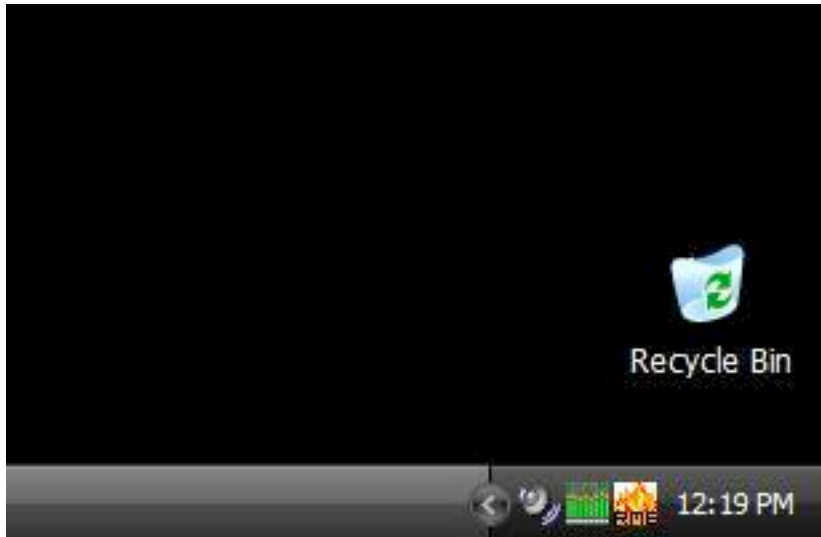
Wait a few seconds while the driver files are copied into their respective locations.



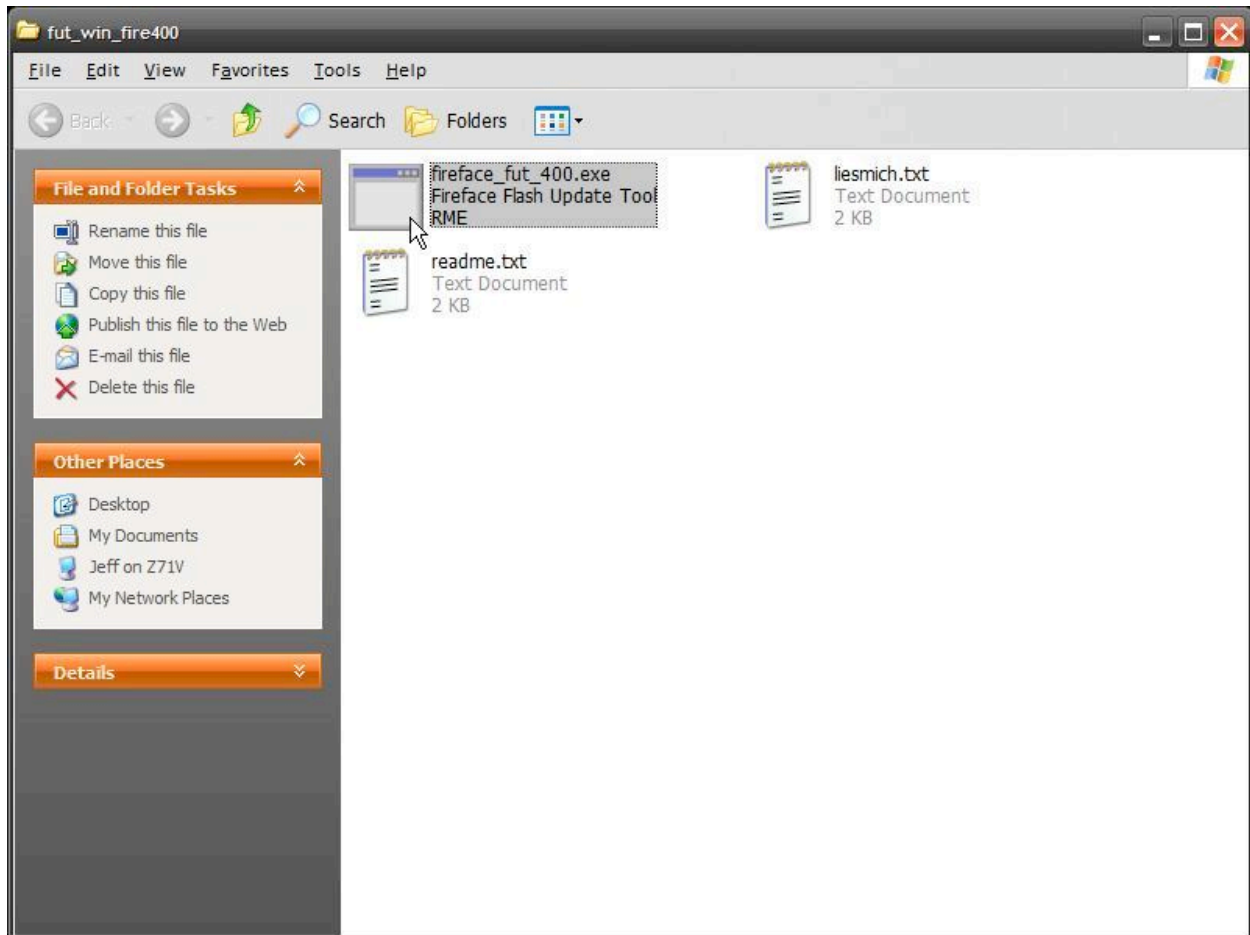
Then click **Finish** to close the wizard. **Restart** your computer when prompted to complete the driver installation procedure.



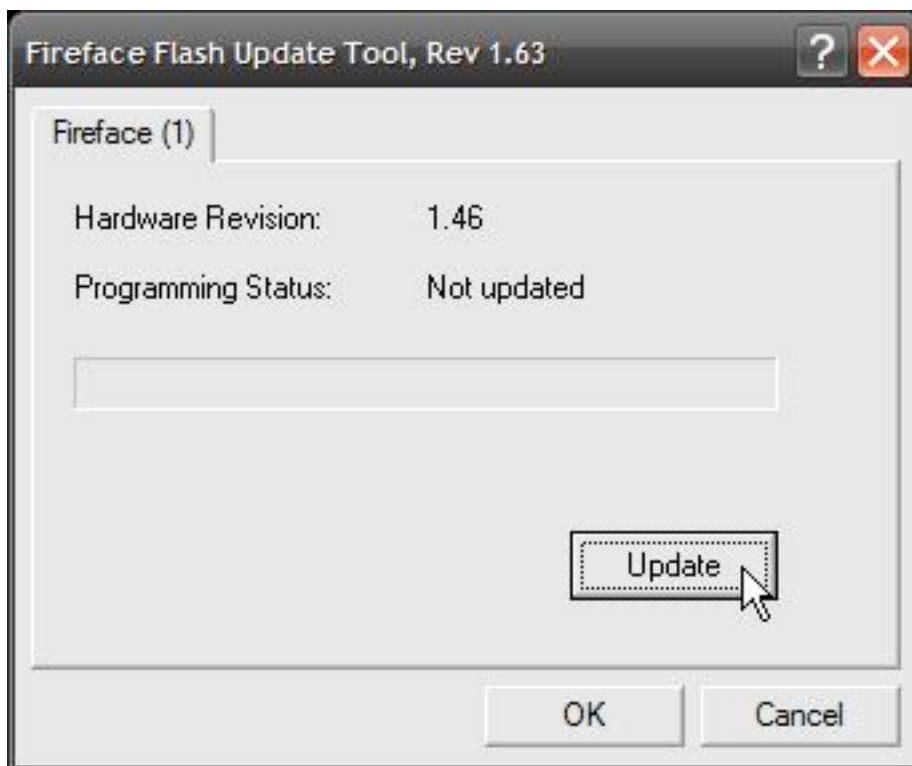
Upon restart, you may be asked whether you want the RME Mixer and Settings applications to be permitted to run at startup; Uncheck **Ask me every time**, then click **Allow**. At this point you should see the Mixer and Settings icons in your system tray.



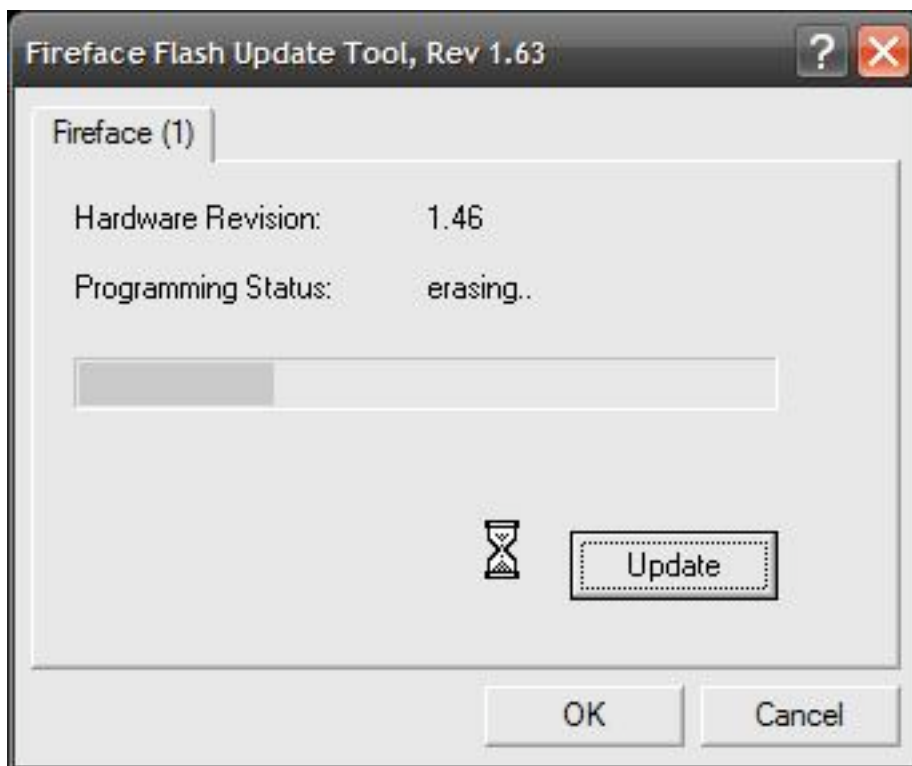
Open the **FUT** folder you extracted earlier and run the executable file to launch the Flash Update Tool. Note that the Flash Update Tool will not run unless the proper driver is already installed.



If the tool shows that the firmware is already up to date, click **Cancel**. If it says "Not updated", click the button marked **Update**.



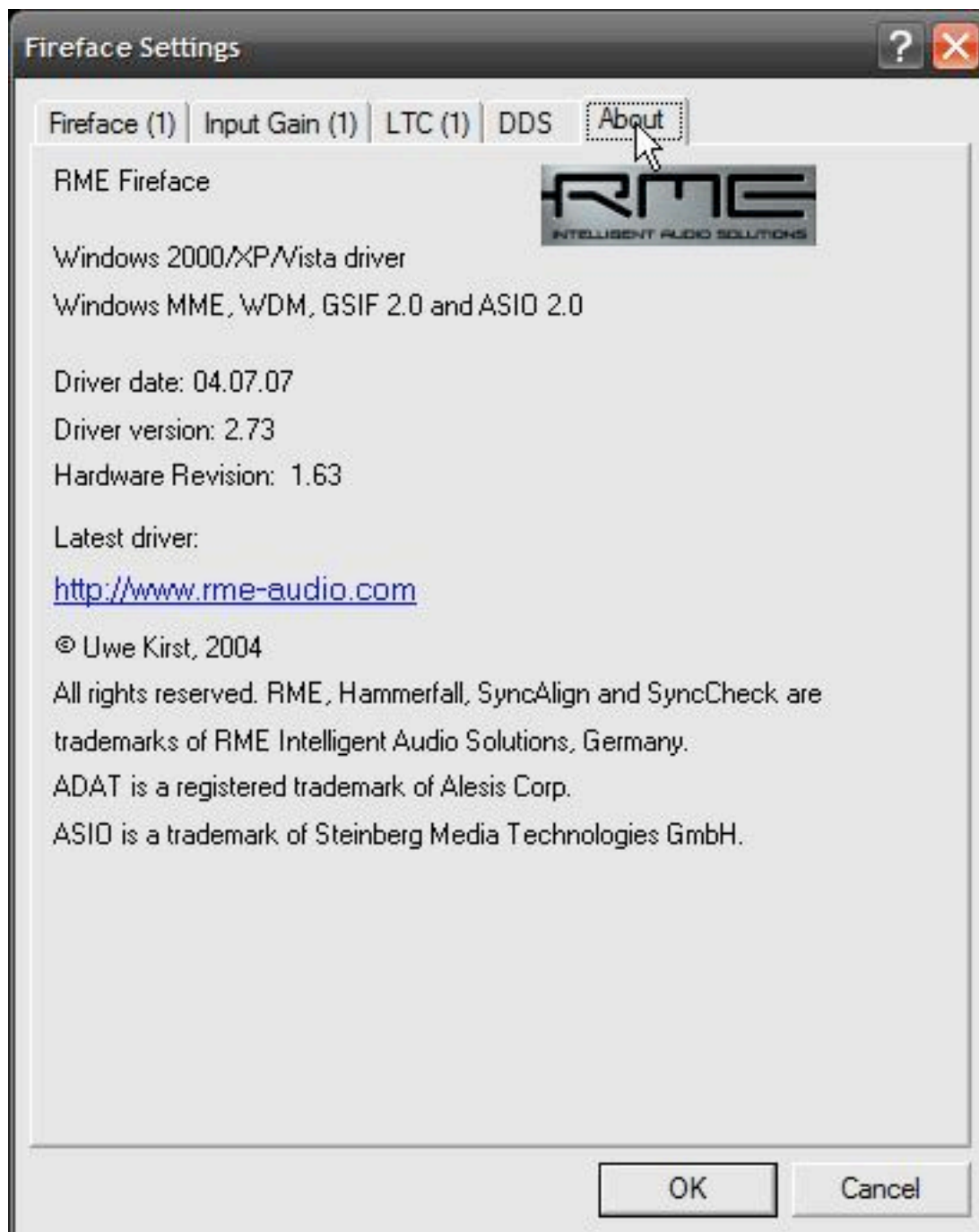
Wait for the tool to erase, reprogram, and check the new firmware. Then click **OK**.



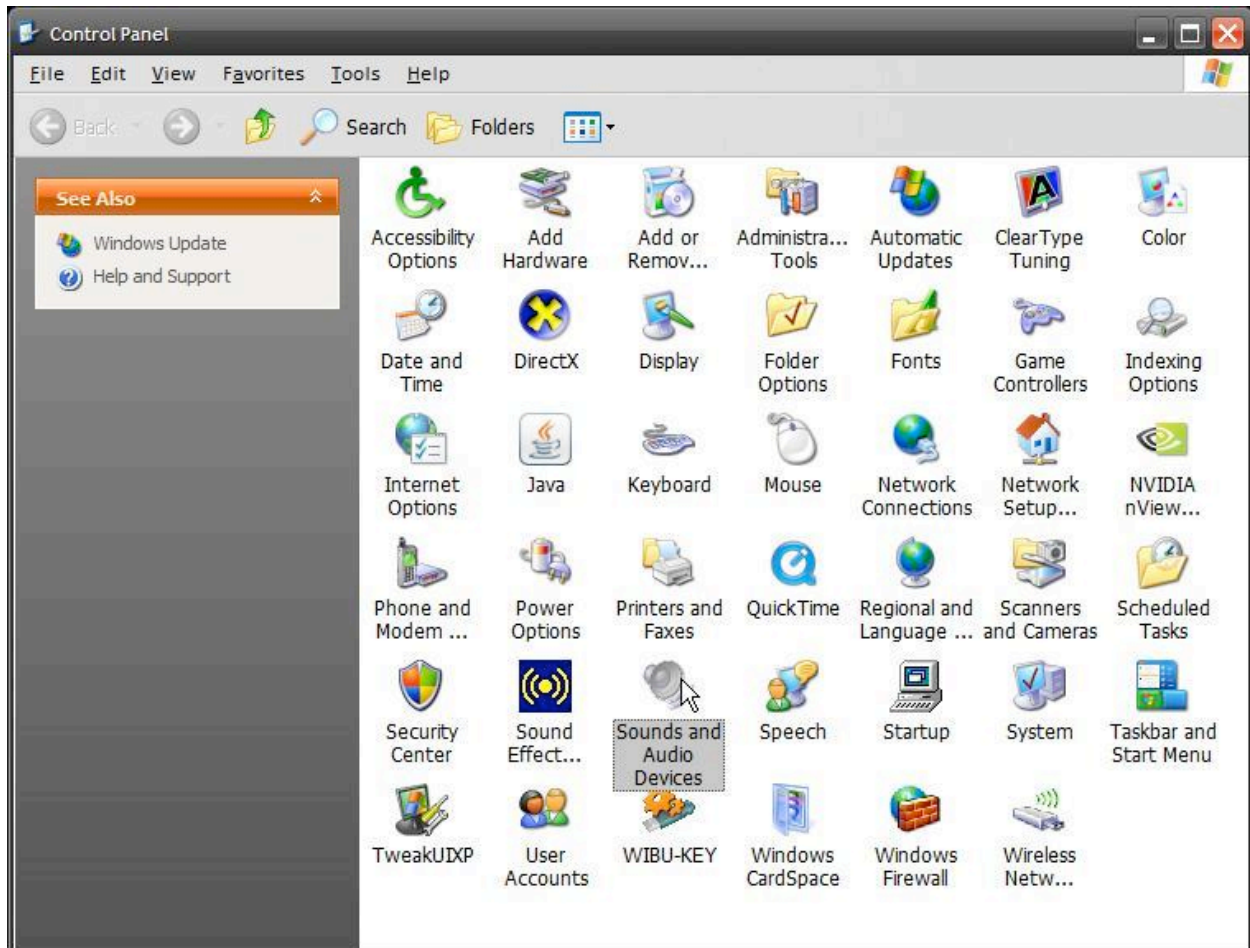
After a firmware flash update, it is required to **power off the computer** (not restart) in order to load the new firmware. However, if installing a Fireface, it is required to **power off the device** instead.

After restarting the computer (or device), you may be prompted to install the drivers once more. This is only the case when a very big change to the hardware has occurred due to the Flash Update Tool, such as changing from the HDSP MME driver to the newer HDSP WDM driver. Simply follow the instructions above once more to install the driver properly again.

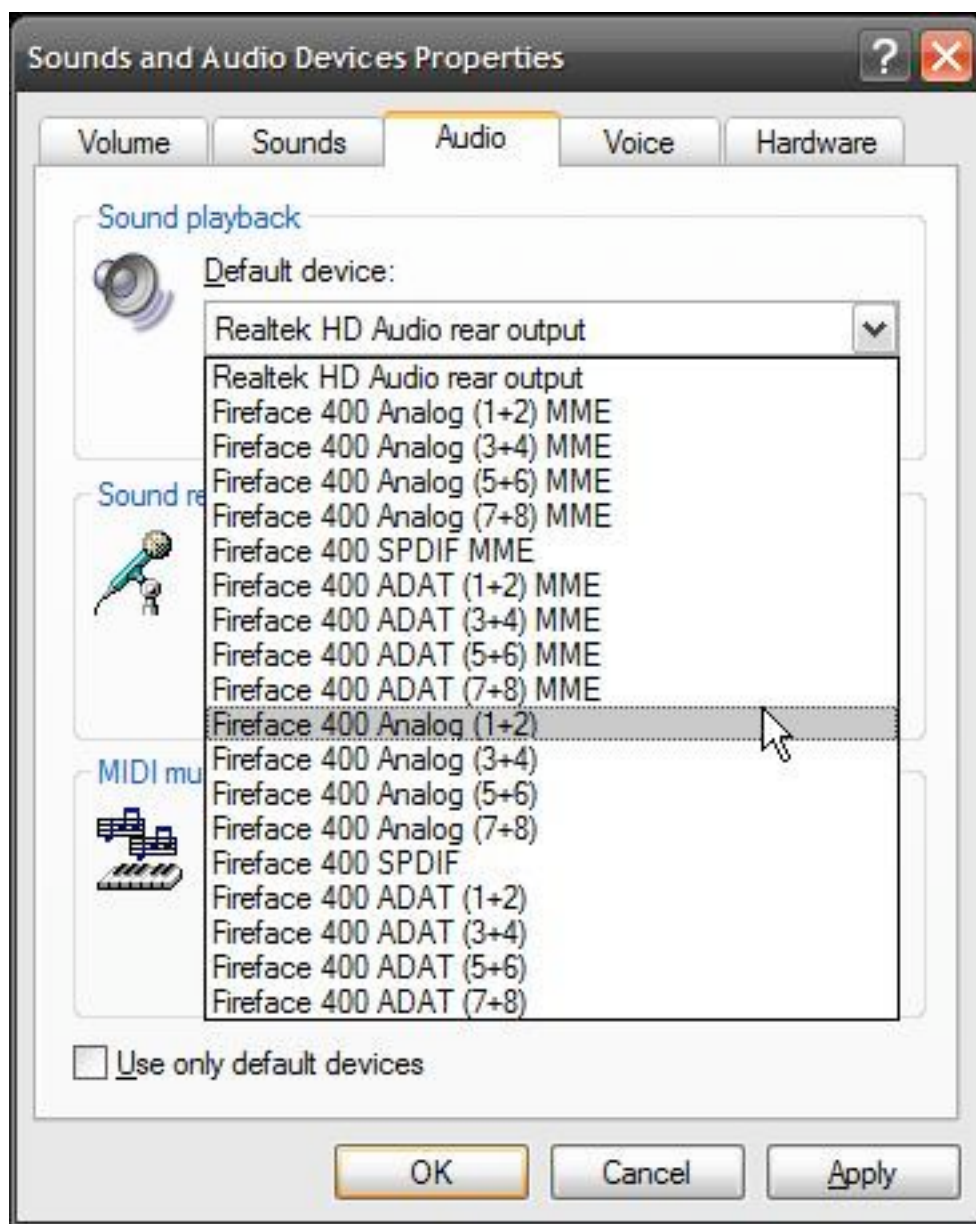
Check the **About** tab in the Settings application to verify that you have the latest driver and firmware loaded.



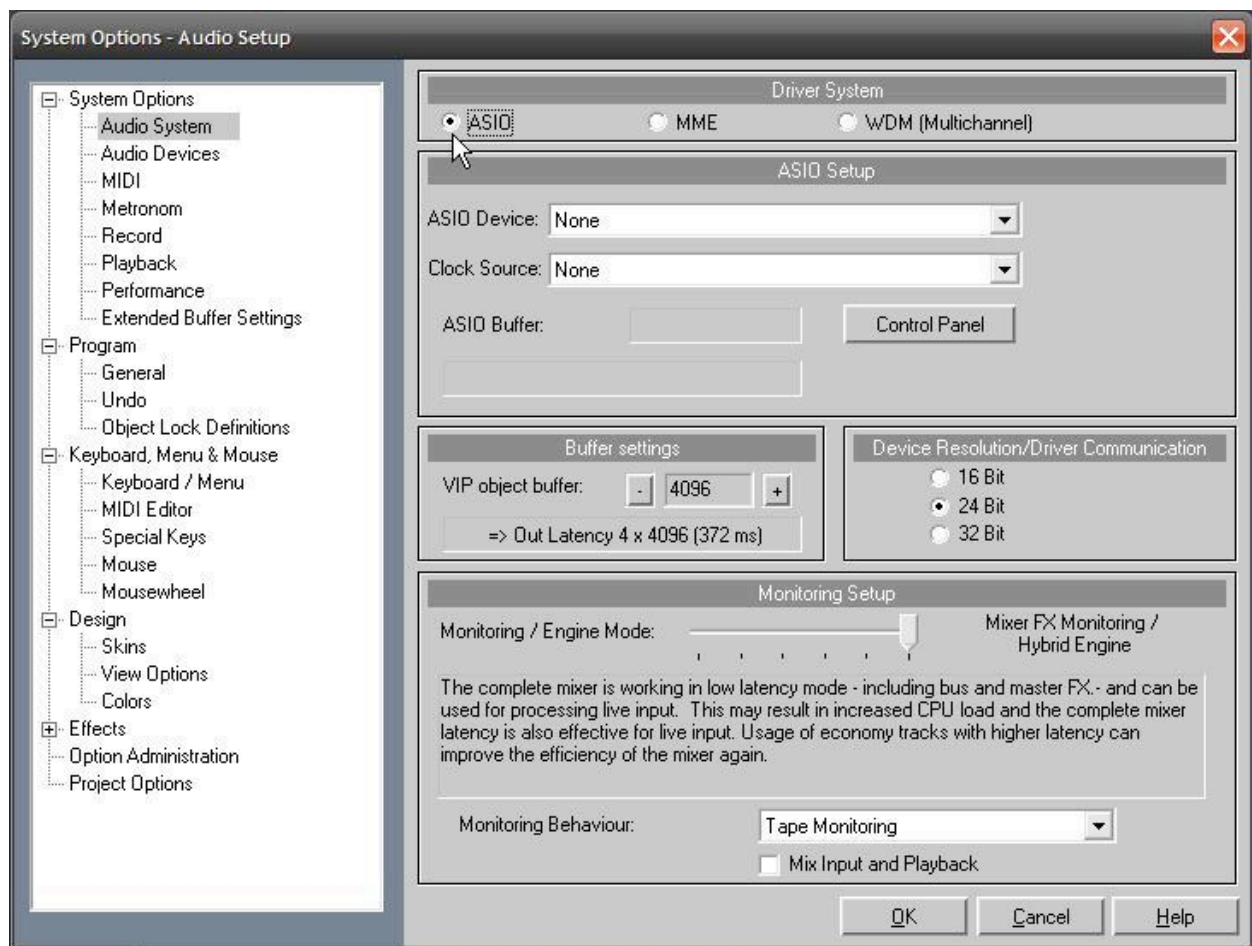
In order to set up your RME device for general multimedia stuff (iTunes, WMP, browser audio, etc.), you will need to go into the Control Panel and select **Sounds and Audio Devices**.



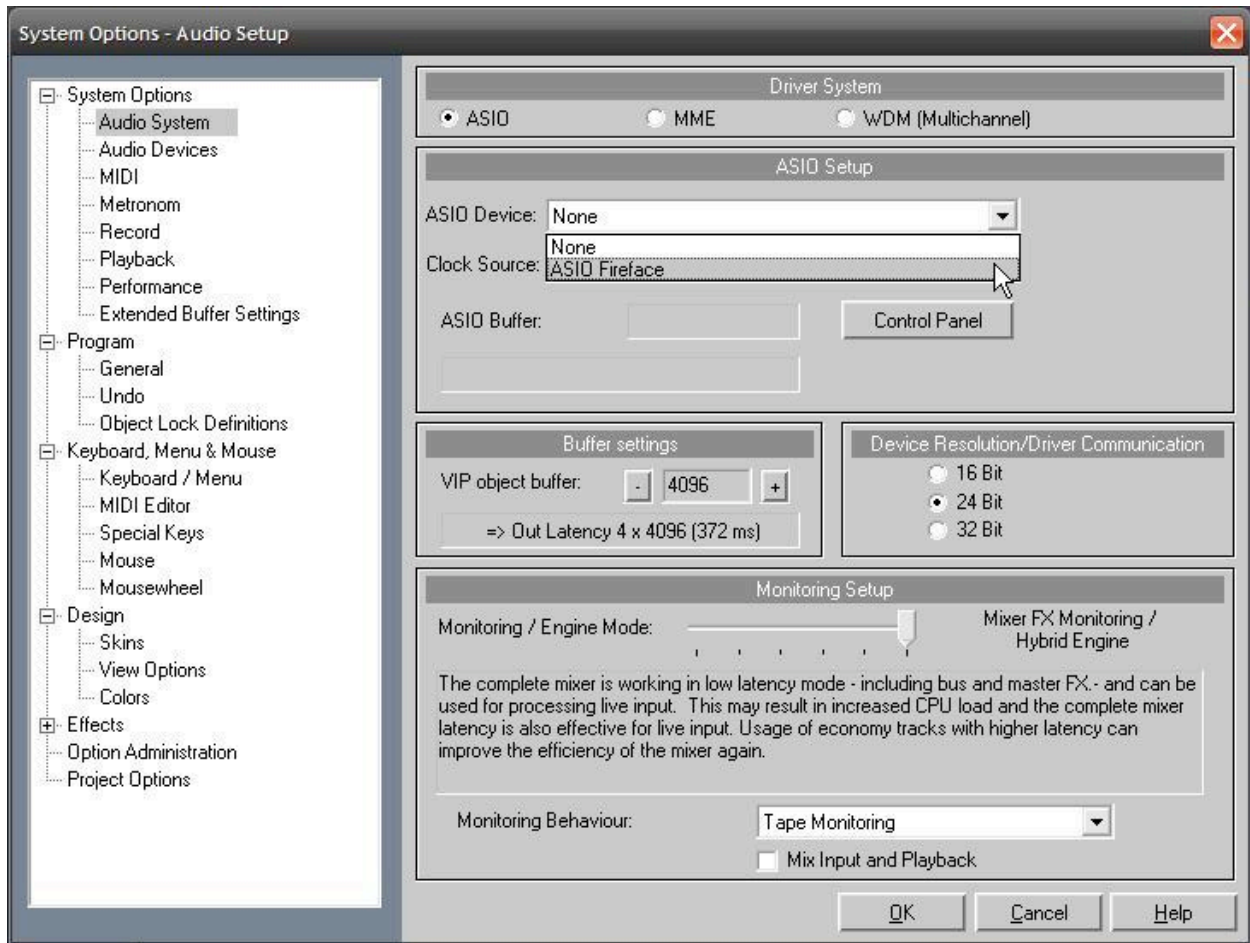
Go to the **Audio** tab and select whichever output pair you prefer for monitoring.



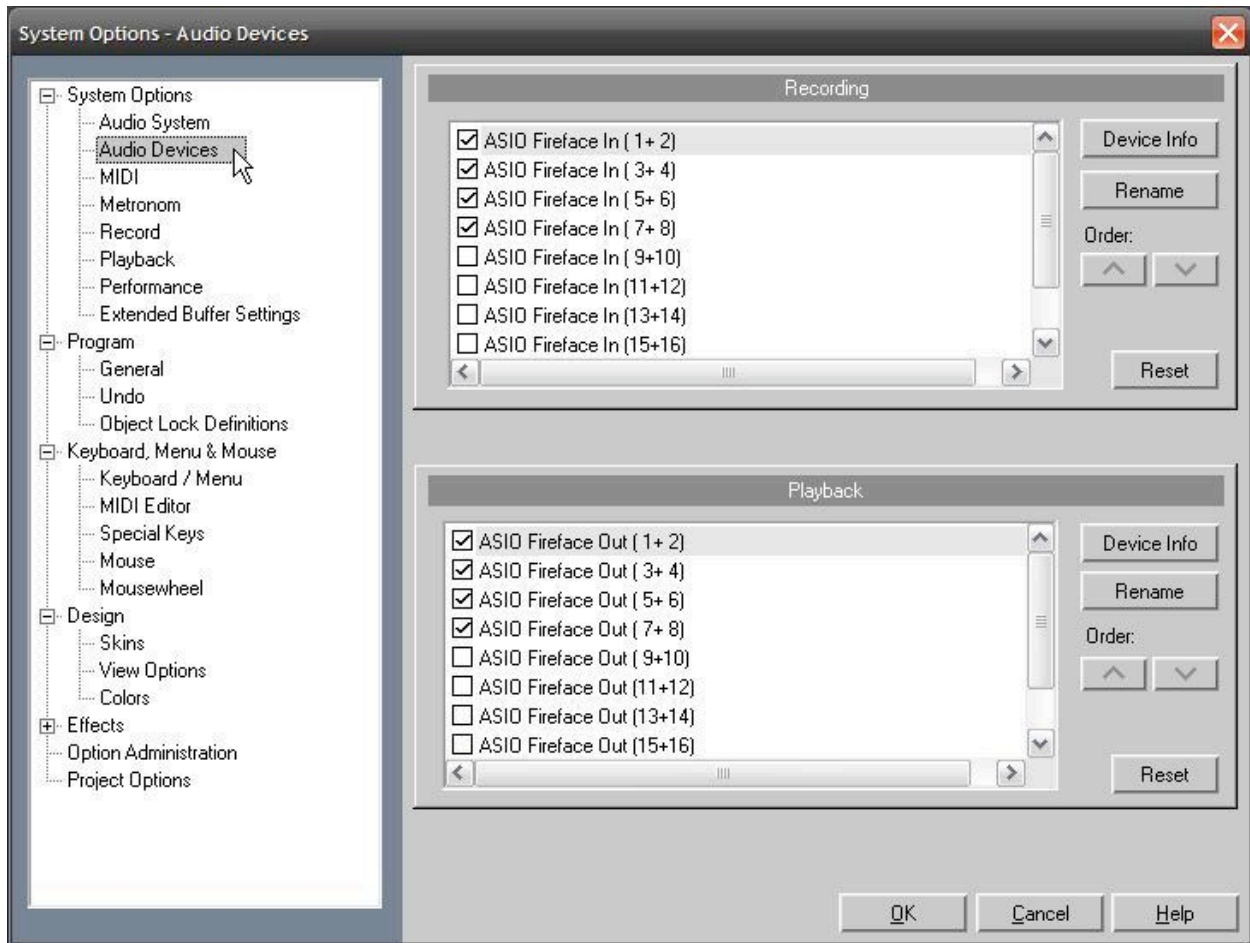
Next, set up the audio device in your DAW software. The dialog for Samplitude is shown below, but other software should be similar.



Normally, you will want to use ASIO drivers for best performance here.



Make sure you enable any channels you need for recording and playback.



At this point your RME device will be completely configured for normal use. If you have questions or problems beyond this guide please post in the proper forum or contact your local [RME support specialist](#).